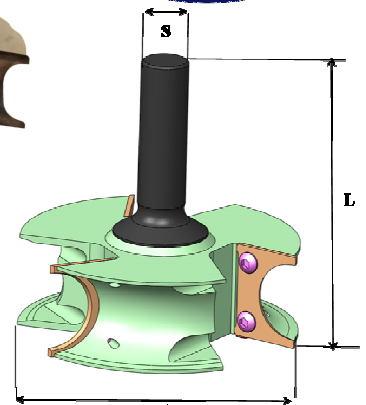
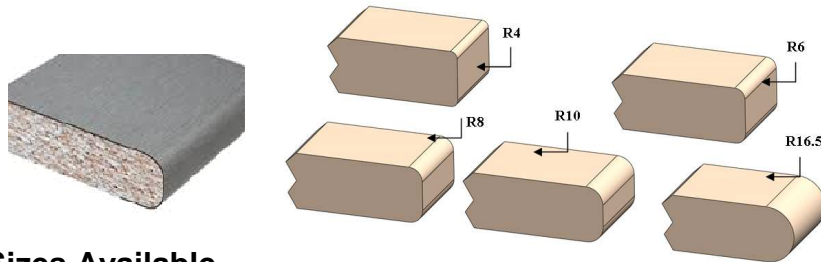


# Post Forming Router Profiles

# 2 Wing

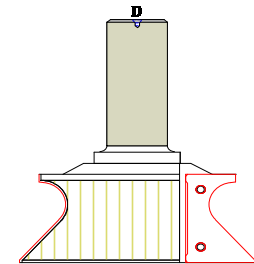
### Application:

For production of various Post-forming profiles on CNC routing machines.  
 Normally used for routing of edge profiles and kitchen bench tops.  
 Also can be set for rebate on lower surface of board.  
 Uses 40mm wide inserts.



### Sizes Available

CODE	D	L	Shank	Wings	Insert Used
DPFF 1004035-R4-16 or 20	100	40	16 or 20	2	40 x 35 x 2 FT P1064
DPFF 1004035-R6-16 or 20	100	40	16 or 20	2	40 x 35 x 2 FT P1063
DPFF 1004035-R8-16 or 20	100	40	16 or 20	2	40 x 35 x 2 FT P1062
DPFF 1004035-R10-16 or 20	100	40	16 or 20	2	40 x 35 x 2 FT P1061
DPFF 1004035-R16.5-16 or 20	100	40	16 or 20	2	40 x 35 x 2 FT P186
DPFF 1004035-SN-16 or 20 Shark Nose Profile	100	40	16 or 20	2	40 x 35 x 2 FT P1092



SHARK NOSE

### Spare Parts

- Screw M4 x 9HD
- Key T15 Torx SD

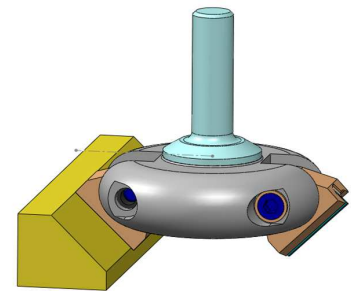
LAST DIGITS ON CODE NUMBER DENOTES SHANK SIZE CHOOSE EITHER 16 OR 20.

# Adjustable Angle Router

# 2 Wing

### Application:

For production of various angled profiles on CNC routing machines.  
 Normally used for routing of edge profiles on long length timber, also can be set for angled rebate on top surface of board.  
 Uses 40 or 50 mm wide inserts.



### Sizes Available

CODE	D	L	I	Shank	Wings	Insert used
DAAR 12540-20	125	120	40	20	2	40 x 12 x 1.5
DAAR 12540-25	125	120	40	25	2	40 x 12 x 1.5
DAAR 12550-20	125	130	50	20	2	50 x 12 x 1.5
DAAR 12550-25	125	130	50	25	2	50 x 12 x 1.5

### Spare Parts :

- Wedge W4012-TS-T3  
W5012-TS-T3
- Screw M6 x 10 DPGS  
M8 x 20 LSHCS
- Key M5 ALLEN KEY  
M3 ALLEN KEY